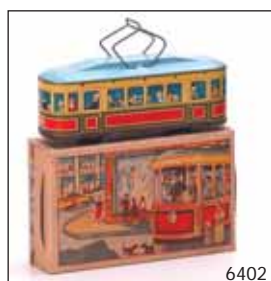




6401



6402



6403



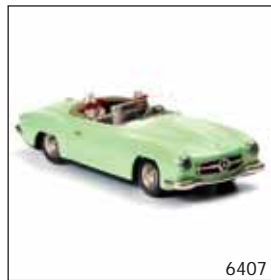
6404



6405



6406



6407



6408



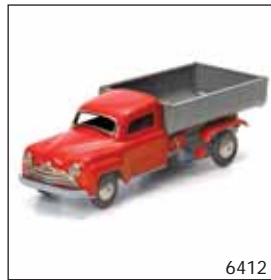
6409



6410



6411



6412



6413



6414



6415



6416



6417



6418



6419



6420

- | | | | | | |
|------|--|-------------|------|---|-------------|
| 6401 | G.E./T.C. ?, Halloween-Bahn, US Zone Germany, Blech, Uhrwerk ok., Lackierung perfekt, Z 1, unbespielt, selten, Okt. perfekt, (8)
G.E./T.C.?, Halloween-course, US Zone Germany, tin, clock work driving, varnish perfect, condition 1, mint, rare, original box perfect, | 165,00 EURO | 6410 | Kellermann x 2, 1x Feuerwehr 1x ADAC Strassenwacht, Germany, 12-18 cm, Blech, Friktion ok, Okt. beschädigt, Z 1-2, (206)
Kellermann x 2, 1x fire brigade 1x ADAC road guard, Germany, tin, friction ok original box damaged, | 40,00 EURO |
| 6402 | Blomer + Schüler, Straßenbahn Nr 530, US Zone Germany, ca 13,5 cm, Uhrwerk ok., minimale Lackschäden, Z 1, selten, (8)
B + S, tram no 530, Us Zone Germany, clock work driving, minor paint damage, condition 1, rare, | 185,00 EURO | 6411 | Tippco, Sattelschlepper, Germany, 33 cm, Blech, Uhrwerk ok, Z 1-, (206) | 350,00 EURO |
| 6403 | ARNOLD, Militär-Sattelschlepper Nr. 3033F, Abschlußvorrichtung mit Rakete, Western Germany, Blech, Friktion ok, Funktionen ok, Okt, Z 1 (8)
ARNOLD, military articulate truck no. 3033F, launch appliance with rocket, western germany, tin, friction okay, functions okay, original packaging, condition 1 | 185,00 EURO | 6412 | Tippco, artic lorry, Germany, tin, windup ok, condition 1-, (206) | 100,00 EURO |
| 6404 | G.Fischer, VW Bretzelkäfer G.F 209, US-Zone Germany, 9,5 cm, Blech, Uhrwerk ok., minimale Lackschäden, seltene Variante, Z 1-2, (246)
G.Fischer, VW Bretzelkäfer G.F 209, US-zone Germany, tin, windup ok, minimale losses of paint, rare version, condition 1-2, | 650,00 EURO | 6413 | Distler, LKW für Elektrotankstelle, Germany, 23 cm, Blech, (206)
Distler, truck for electric patrol station, Germany, tin, condition 1, (206) | 80,00 EURO |
| 6405 | Schuco, Elektro-Phänomenal 5503 mit Tanksäule, Germany, 22 cm, Blech, beide Z 1-, (206)
Schuco, Elektro-Phänomenal 5503 including patrol pump, Germany, tin both condition 1-, | 290,00 EURO | 6414 | Dressler, Polizei + Feuerwehr, Germany, 16 cm, Blech, Friktion ok, Z 1-2, 3, (206)
Dressler, police + fire brigade, Germany, tin, friction ok, condition 1-2, 3, | 80,00 EURO |
| 6406 | Höfler, Reise-Express, Germany, 28 cm, Blech, Friktion ok, rostig, Z 3, (206)
Höfler, travel coach, Germany, tin, friction ok, rusty, condition 3, (206) | 50,00 EURO | 6415 | Bandai + Huki, ADAC Strassenwacht, Japan + Germany, 16-26 cm, Blech, Batterieantrieb ok, Z 1-2, (206)
Bandai + Huki, ADAC road guard, Japan + Germany, tin, batterie drive ok, condition 1-2, | 80,00 EURO |
| 6407 | JNF, Mercedes, Germany, 30 cm, Blech, Friktion ok, Hund bellt nicht mehr, Scheibe geklebt, Z 1-2, (206)
JNF, Mercedes, Germany, tin, friction ok, dog not barking anymore, screen glued, condition 1-2, | 400,00 EURO | 6416 | Göso, LKW + Anhänger, Germany, 44 cm, Blech, Friktion ok, Z 2+, (206)
Göso, truck + trailer, Germany, tin, friction ok, condition 2+, (206) | 100,00 EURO |
| 6408 | Tippco, Walze, Germany, 21 cm, Blech, Okt. Z 1-, Z 1, (206)
Tippco, roller, Germany, tin, original box condition 1-, condition 1, | 100,00 EURO | 6417 | Gescha, Raupenschlepper, Germany, 18 cm, Blech, Uhrwerk ok, Okt. Z 1, Z 1, (206)
Gescha, caterpillat truck, Germany, tin, windup ok, original box condition 1. condition 1, | 100,00 EURO |
| 6409 | Erco, Rennwagen Clipper, Germany, 23 cm, Blech, Germany, 23 cm, Windschutzscheibe fehlt, Z 1-, (206)
Erco, racing car clipper, Germany, tin, windscreen missing, condition 1-, | 45,00 EURO | 6418 | Fischer, 2 Tankstellen, Germany, 10-18 cm, Blech, Z 2+, (206)
Fischer, 2 patrol stations, Germany, tin, condition 2+, (206) | 150,00 EURO |
| | | | 6419 | Tippco, VW-Bus, Ersatzteilsender, Germany, 23 cm, Blech, Z 4, (206)
Tippco, VW-bus, replacement source, Germany, tin, condition 4, (206) | 90,00 EURO |
| | | | 6420 | Keim, Tankwagen, Germany, 34 cm, Kunststoff, Z 1, (206)
Keim, tank truck, Germany, plastic material, condition 1, (206) | 40,00 EURO |
| | | | | Konvolut Tiere, 2x Köhler, 2x Lehmann, Germany, Blech, Z1-2, (206)
convolute animals, 2x Köhler, 2x Lehmann, Germany, tin, condition 1-2 | 40,00 EURO |



- | | | | | |
|------|--|-------------|--|--|
| 6421 | Marusan Motorboot 2-J "Champion", 30 cm, Elektroantrieb nicht geprüft, Blech, Z 1-, Marusan motorboat 2 J, "Champion", electric drive not checked, tin, condition 1-, | 35,00EURO | Hausser, Packgeschütz und Feldküche, Germany prewar, tin, some pieces missing or changed, condition 2-3, | 145,00 EURO |
| 6422 | PRO-MOD, Touristen Jeep, Philippinen, 22 cm, Druckguss, Z 1.2, (739) | 25,00 EURO | 6432 | Tippco, Police-Citroen-PKW, W.Germany, 22,5 cm, Blech, Friktion ok, Okt. Z 2-, Kartonlaschen lose, Fahrzeug-Oberteil lose, Z 2+, (297) |
| 6423 | PRO-MOD, tourism Jeep, Philippines, diecast, condition 1-2, | 25,00 EURO | 6433 | Tippco, Police-Citroen-PKW, W.Germany, tin, friction ok, original box condition 2-, clips loose, vehicle top lose, condition 2+, |
| 6424 | Yone, Autotransporter, 3-achsiger, Japan, 36 cm, Blech, Friktion ok, Z 1-2, (739) | 40,00 EURO | 6434 | Tippco, Packard Limousine, US-Zone Germany, 24,5 cm, Blech, Uhrwerk ok, minimale Lackschäden, Z 1-2, (297) |
| 6425 | Yone u. Martoy, Schubraupe u. Baggerkran, Japan, M 1:30, Blech, Z 2, (739) | 35,00 EURO | 6435 | Tippco, Packard limousine, US-zone Germany, tin, windup ok, minimale losses of paint, condition 1-2, |
| 6426 | Gepäckdose Alpenhaus, Germany?, 29x18,5x26,5 cm, Blech, minimale lackschäden, Z 1-2, (739) | 85,00 EURO | 6436 | Göso, Abschlepp-LKW m. Scheinwerfer, W.Germany, Blech, Friktion ok, mit Geräusch, Okt. Z 1-2, selten, Z 2+, (297) |
| 6427 | Hoch & Beckmann, Kirmes Scooter und Schuco Patentboot No 1015, Germany, 12 cm, Blech, Uhrwerk ok, 1x Lackschäden, Lenkrad, Flaggenstange u. Figur fehlen, Z 2:3, (739) | 65,00 EURO | 6437 | Göso, breakdown truck with spot light, W.Germany, tin, friction ok, makes noise, original box condition 1-2, rare, condition 2+, |
| 6428 | Ebo, Pfau Pao-pao, Germany, VK, 27 cm, Blech, Uhrwerk nicht geprüft, Z 2, (739) | 145,00 EURO | 6438 | P.Niedermeier, Flugspiel Nr.520, W.Germany, H 25 cm, Blech, Batterieantrieb nicht geprüft, Okt. Z 1-2, Z 1-2, (297) |
| 6429 | Biller, Bagger, W.Germany, 23 cm, Blech, Batterieantrieb nicht geprüft, Z 2-3, (739) | 240,00 EURO | 6439 | P.Niedermeier, Flugspiel No 520, W.Germany, tin, batterie drive not checked, original box condition 1-2, condition 1-2, |
| 6430 | GAMA, Panzer No 60, Germany, VK, 18 cm, Blech, Uhrwerk ok, Kette dreht durch, einige Kleinteile fehlen, Z 3, (739) | 165,00 EURO | 6440 | M.Seidel, Mercedes Cabrio, W.Germany, 26,5 cm, Blech, Friktion ok, späte Version, mit Figur, Z 1-2, (297) |
| 6431 | Hausser, Packgeschütz und Feldküche, Germany VK, M 1:22, Blech, einige Kleinteile fehlen bzw geändert, Z 2-3, (739) | | | M.Seidel, Mercedes Cabrio, W.Ger.any, tin, friction ok, late version, includes figure, condition 1-2, |



6441



6442



6443



6444



6445



6446



6447



6448



6449



6450



6451



6452



6453



6454



6455



6456



6457



6458



6459



6460

- 6441 P.Niedermeier, Traktor Nr.420, W.Germany, 16 cm, Blech, Uhrwerk ok, Okt. Z 1-2, Z 1-2, (297)
P.Niedermeier, tractor No 420, W.Germany, tin, windup ok, original box condition 1-2, condition 1-2, 160,00 EURO
- 6442 P.Niedermeier, Cabrio Nr.160, W.Germany, 26,5 cm, Blech, Friktion ok, minimale Lackschäden, Okt. Z 1-2, Z 1-2, (297)
P.Niedermeier, Canrio No 160, W.Germany, tin, friction ok, minimale losses of paint, original box condition 1-2, condition 1-2, 150,00 EURO
- 6443 M.Seidel, Mercedes LKW-Zug m. 2-achsigen Hänger, W.Germany, 70 cm, Gemischtbauweise, Uhrwerk ok, Okt. Z 1-2, mit Planen, Z 1-2, (297)
M.Seidel, Mercedes truck & trailer with 2 axes, W.Germany, mixed material, windup ok, original box condition 1-2, includes canvas cover, condition 1-2, 150,00 EURO
- 6444 M.Seidel, Kran-LKW Nr.1208, W.Germany, 35 cm, Gemischtbauweise, Friktion ok, Okt. Z 1-1, Z 1-, (297)
M.Seidel, crane truck No 1208, W.Germany, mixed material, friction ok, original box condition 1-2, condition 1-, 120,00 EURO
- 6445 NBN, Hafen Kran, W.Germany, 50 cm, Blech, Uhrwerk ok, Okt. Z 2-3, Z 1-, (297)
NBN, dock crane, W.Germany, tin, windup ok, original box condition 2-3, condition 1-, 190,00 EURO
- 6446 GAMA, Hafen-Combikran Nr.287, W.Germany, 30 cm, Gemischtbauweise Blech, Okt. Z 1-2, Z 1-2, (297)
GAMA, harbour-combi crane No 287, W.Germany, mixed material tin, original box condition 1-2, condition 1-2, 190,00 EURO
- 6447 Biller, Raupenbagger mit Greifer, W.Germany, M 1:40, Blech, Uhrwerk ok, Okt. Z 1-2, 1 Gummiraupen gerissen, Z 1-2, (297)
Biller, caterpillar digger, W.Germany, tin, clockwork ok, original box condition 1-2, 1 rubber chain broken, condition 1-2, 590,00 EURO
- 6448 GAMA, Kurbeltraktor mit Seitenkipphanhänger, Germany US-Zone, Zug 40 cm, Blech, Uhrwerk ok, Okt. Z 1-2, mit Figur, Z 1-2, (297)
GAMA, tractor with trailer, Germany US-zone, tin, windup ok, original box condition 1-2, with figure, condition 1-2, 250,00 EURO
- 6449 Biller, Raupenkran m. Greifer, W.Germany, M 1:40, Blech, Uhrwerk ok, Okt. Z 1-2, Gummiraupen gerissen, Z 1-2, (297)
Biller, caterpillar crane, W.Germany, tin, windup ok, original box condition 1-2, rubber chain broken, condition 1-2, 650,00 EURO
- 6450 GAMA, Tiefeladersattelschlepper Nr.275, W.Germany, 74 cm, Blech, Uhrwerk ok, Okt. Z 2-, Z 2+, (297)
GAMA, artic lorry No 275, W.Germany, tin, windup ok, original box condition 2-, condition 2+, 320,00 EURO
- 6451 Biller, LKW mit Kranbagger, W.Germany, 40 cm, Blech, Uhrwerk ok, Okt. Z 1-2, selten!, Z 1-2, (279)
Biller, truck with crane digger, W.Germany, tin, windup ok, original box condition 1-2, rare!, condition 1-2, 650,00 EURO
- 6452 Gescha, Schubraupenschlepper 'Imperator' No 751, W.Germany, 26 cm, Blech, Batterieantrieb nicht geprüft, Okt. Z 1-2, Z 1-2, (279)
Gescha, caterpillar 'Imperator' No 751, W.Germany, tin, batterie drive not checked, original box condition 1-2, condition 1-2, 350,00 EURO
- 6453 Arnold, mechanische Ente mit Stimme Nr.920 'Quaak', W.Germany, 15 cm, Blech Plüschüberzogen, Uhrwerk ok, Okt. Z 2, Z 1-2, (279)
Arnold, mechanical duck with voice No 920 'Quaak', W.Germany, tin, windup ok, original box condition 2, condition 1-2, 75,00 EURO
- 6454 GAMA, ADAC Hubschrauber No 2001, W.Germany, 22 cm, Blech, Friktion ok, Okt. Z 1-2, komplett m. Bahre u. Figur, Z 1, (279)
GAMA, ADAC helicopter No 2001, W.Germany, tin, friction ok, original box condition 1-2, complete with stretcher and figure, condition 1, 70,00 EURO
- 6455 Biller, Hafenkran 'Dock-Crane', W.Germany, 21,5 cm, Blech, Uhrwerk ok, Okt. Z 2, lose Seitenlaschen, Z 1, (279)
Biller, harbour crane 'dock-crane', W.Germany, tin, windup ok, original box condition 2, clips loose, condition 1, 100,00 EURO
- 6456 Distler, Autobahn mit 2 PKW, US-Zone Germany, 75 cm, Blech, Uhrwerk ok, Okt. Z 1-2, Z 1-2, (279)
Distler, motorway with 2 cars, US-zone Germany, tin, windup ok, original box condition 1-2, condition 1-2, 190,00 EURO
- 6457 Gescha, Rangierbahn mit Schiebebühne 'universal transport station', US-Zone Germany, 91 cm, Blech, Uhrwerk ok, Okt. Z 2+, Z 1-2, (279)
Gescha, Rangierbahn mit Schiebebühne 'universal transport station', US-zone Germany, tin, windup ok, original box condition 2+, condition 1-2, 100,00 EURO
- 6458 GAMA, Caravelle Air France Nr.1006, W.Germany, 39,5 cm, Blech, Friktion ok, Okt. Z 2, Z 1-2, (279)
GAMA, Caravelle Air France No 1006, W.Germany, tin, friction ok, original box condition 2, condition 2, 250,00 EURO
- 6459 NBN/ Nürnberger Blechspielzeuge, Hafendrehkran, US-Zone Germany, 49 cm, Blech, Uhrwerk, Okt. Z 1, 1 Lasche fehlt, Z 1-, (279)
NBN/ Nürnberger Blechspielzeuge, harbour crane, US-zone Germany, tin, windup, original box condition 2, 1 clip missing, condition 1-, 190,00 EURO
- 6460 GAMA, LKW mit Suchscheinwerfer Nr.299, W.Germany, 29 cm, Blech, Friktion ok, Okt. Z 1-2, Z 1-, (279)
GAMA, truck with spotlight No 299, W.Germany, tin, friction ok, original box condition 1-2, condition 1-, 150,00 EURO



- | | | | | | |
|------|---|-------------|------|--|-------------|
| 6461 | Tippco, Düsenjäger 'Phantom' Nr.57f, W.Germany, 26,5 cm, Blech, Friktion ok, Okt. Z 3-4, Z 2-, (279)
Tippco, jet fighter 'Phantom' No 57f, W.Germany, tin, friction ok, original box condition 3-4, condition 2-, | 100,00 EURO | 6471 | Gescha, Traktor mit Anhänger Nr.74, W.Germany, 42 cm, Blech, Uhrwerk ok, Okt. Z 1-2, Z 1-2, (279)
Gescha, tractor with trailer No 74, W.Germany, tin, windup ok, original box condition 1-2, condition 1-2, | 250,00 EURO |
| 6462 | M.Seidel, Magirus LKW m. Raketenabschubeinrichtung MS 1223, W.Germany, 37 cm, Blech, Okt. Z 1-2, Z 1-, (279)
M.Seidel, Magirus truck with rocket launch MS 1223, W.Germany, tin, original box condition 1-2, condition 1, | 120,00 EURO | 6472 | Niedermeier, Tankstelle, W.Germany, 36x50 cm, Blech, Okt. Z 1-2, Z 1-, (1648)
Niedermeier, petrol station, W.Germany, tin, original box condition 1-2, condition 1-, | 250,00 EURO |
| 6463 | GAMA, Kipp-LKW mit Ladeschaufel Nr.249/1/2, W.Germany, 28 cm, Blech, Friktion ok, Okt. Z 2+, Z 1-2, (279)
GAMA, truck with bucket No 249/1/2, W.Germany, tin, friction ok, original box condition 2+, condition 2+, | 290,00 EURO | 6473 | Hausser-Elstolin, Klappbordhänger mit 2 Zugpferden, West-Germany, ca 32 cm, Masse, Lackierung perfekt, Z 1, unbespielt, (8)
Hausser-Elastolin, hanger with 2 horses, West-Germany, plastic, varnish perfect, condition 1, mint, | 500,00 EURO |
| 6464 | Gescha, Rangierbahn mit Lok, einfache Version, US-Zone Germany, 72,5 cm, Blech, Uhrwerk ok, Okt. Z 2+, Z 1-2, (279)
Gescha, rail with locomotive, simple version, US-zone Germany, tin, windup ok, original box condition 2+, condition 1-2, | 100,00 EURO | 6474 | JNF, Telecar, US-Zone Germany, 26 cm, Blech, Uhrwerk ok, Z 1, (714)
JNF, Telecar, US-zone Germany, tin, windup ok, condition 1, | 100,00 EURO |
| 6465 | GAMA, LKW mit Hebebühne Nr.255, W.Germany, 29,5 cm, Blech, Uhrwerk ok, Okt. Z 2+, 1 Lasche gerissen, Z 2+, (279)
GAMA, truck with lift No 255, W.Germany, tin, windup ok, original box condition 2+, 1 clip broken, condition 2+, | 490,00 EURO | 6475 | GAMA, Mercedes elektro, Germany, 23 cm, Gemischtbauweise Blech/ Kunststoff, Stern fehlt, Z 1-2, (714)
GAMA, Mercedes electro, Germany, mixed material tin/ plastic, star missing, condition 1-2, | 50,00 EURO |
| 6466 | GAMA, Traktor mit Anhänger Nr.1754, W.Germany, 40 cm, Blech, Uhrwerk ok, Okt. Z 1-, funkensprühend, Z 1-2, (279)
GAMA, tractor with trailer No 1754, W.Germany, tin, windup ok, original box condition 1-, sparkling, condition 1-2, | 250,00 EURO | 6476 | GAMA, Buick, Germany, 22 cm, Gemischtbauweise Blech/ Kunststoff, Friktion ok, Z 1-, (714)
GAMA, Buick, Germany, mixed material tin/ plastic, friction ok, condition 1-, | 100,00 EURO |
| 6467 | Göso, Traktor mit Anhänger Nr.418/2, W.Germany, 43 cm, Gemischtbauweise, Uhrwerk ok, Okt. Z 1-, funkensprühend, Z 1-2, (279)
Göso, tractor with trailer No 418/2, W.Germany, mixed material, windup ok, original box condition 1-, sparkling, condition 1-2, | 200,00 EURO | 6477 | Göso, Brauerei LKW, US-Zone Germany, 21 cm, Blech, Uhrwerk ok, Z 2, (714)
Göso, brewery truck, US-Zone Germany, tin, windup ok, condition 2, | 180,00 EURO |
| 6468 | Göso, Sattelschlepper-Set mit 5 Auflegern, W.Germany, M 1:50, Blech, Uhrwerk ok, Okt. Z 1-2, im Okt. selten, Z 1-2, (279)
Göso, artic lorry with 5 trailers, W.Germany, tin, windup ok, original box condition 1-2, rare in original box, condition 1-2, | 200,00 EURO | 6478 | Göso, Post LKW, US-Zone Germany, Blech, Uhrwerk ok, minimale Lackschäden, Z 2+, (714)
Göso, post truck, US-zone Germany, tin, windup ok, minimale losses of paint, condition 2+, | 160,00 EURO |
| 6469 | Biller, 4 Motorflieger Vickers Viscount Nr.701, W.Germany, 24,5 cm, Blech, Hebelantrieb ok, Okt. Z 2+, unbespielt, Z 1-2, (279)
Biller, 4 motor airplanes Vickers Viscount No 701, W.Germany, tin, crank drive ok, original box condition 2+, unused, condition 1-2, | 190,00 EURO | 6479 | Arnold, Mercedes 300 SL, Germany, 29 cm, Blech, Okt. Z 2, Fernbediehnung abgeschnitten, Z 1-2, (714)
Arnold, Mercedes 300 SL, Germany, tin, original box condition 2, remote controle eliminated, condition 1-2, | 80,00 EURO |
| 6470 | Distler, Electromatic Tankstelle mit Buik-PKW, W.Germany, 17 cm, Gemischtbauweise, Batterieantrieb ok, Okt. Z 1-2, Z 1-2, (279)
Distler, Electromatic patrol station with Buik car, W.Germany, mixed matrial, original box condition 1-2, condition 1-2, | 250,00 EURO | 6480 | GAMA, Raupe, W.Germany, 37 cm, Kunststoff, Okt. Z 2-, Z 1, (14)
GAMA, caterpillar, W.Germany, plastic material, original box condition 2-, condition 1, | 60,00 EURO |



6481



6482



6483



6484



6485



6486



6487



6488



6489



6490



6491



6492



6493



6494



6495



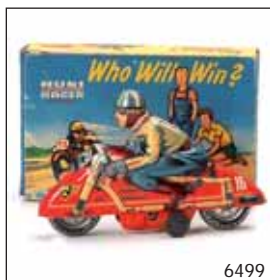
6496



6497



6498



6499



6500

- | | | | | |
|------|---|---|--|--------------|
| 6481 | GAMA, Polizei Mercedes, W.Germany, 23 cm, Blech, Kunststoff, Batterieantrieb nicht geprüft, Okt. Z 2, Z 1-2, (14) | | | |
| 6482 | GAMA, police Mercedes, W.Germany, tin, plastic material, batterie drive not checked, original box condition 2, condition 1-2, | 60,00 EURO | | |
| 6483 | Alps, VW Käfer, police car, Japan, 27 cm, Kunststoff, Batterieantrieb ok, Funktion ok, Okt. Z 1, Z 1, (14) | | | |
| 6484 | Alps, VW Käfer police car, Japan, plastic material, batterie drive ok, function ok, original box condition 1, condition 1, | 70,00 EURO | | |
| 6485 | DUX, Porsche 928, Germany, 49x32 cm, Blech, Okt. Z 1, Z 1, (14) | 25,00 EURO | | |
| 6486 | DUX, Porsche 928, Germany, tin, original box condition 1, condition 1, | 390,00 EURO | | |
| 6487 | Arnold, Teufelsrad, | | | |
| 6488 | Günthermann, Straßenwalze mit Elektromotor Nr.844 M, W.Germany, 27 cm, Blech, Battreieantrieb ok, Z 1, (874) | | | |
| 6489 | Günthermann, road roll with electric motor No 844 M, W.Germany, tin, batterie drive ok, condition 1, | 380,00 EURO | | |
| 6490 | Günthermann, Ambulanz, W.Germany, 28 cm, Blech, Friktion ok, Scheibe vorne defekt, Z 2-, (714) | 180,00 EURO | | |
| 6491 | Günthermann, Ambulance, W.Germany, tin, friction ok, windscreen defect, condition 2-, | | | |
| 6492 | Schuco, Patentauto, Germany VK, 10,5 cm, Blech, Uhrwerk ok, Kühlergrill original ?, Z 2-3, (2177) | 350,00 EURO | | |
| 6493 | Schuco, Patentauto, Germany pre war, tin, windup ok, radiator grill original ?, condition 2-3, | | | |
| 6494 | TippCo, Kübelwagen, Germany VK, 18 cm, Blech, Uhrwerk ok, 3 Figuren, Z 1-, (2177) | 240,00 EURO | | |
| 6495 | TippCo, Jeep, Germany pre war, tin, windup ok, 3 figures, condition 1-, | | | |
| 6496 | TippCo, Sanitäts LKW, Germany VK, 23 cm, Blech, Uhrwerk ok, 2 Figuren, teilweise farblich ausgebessert, (2177) | 400,00 EURO | | |
| 6497 | TippCo, ambulance truck, Germany pre war, tin, windup ok, 2 figures, some paint renewed, | | | |
| 6498 | Märklin, Rennwagen, Germany VK, 36 cm, Blech, Uhrwerk ok, Figur original ?, Z 2, (2177) | 1250,00 EURO | | |
| 6499 | Märklin, racing car, Germany pre war, tin, windup ok, figure original?, condition 2, | | | |
| 6491 | Lehmann, Ski-Rolf, Germany, H 19 cm, Blech, Okt. Z 1-2, Z 1-, (2248) | | | 4900,00 EURO |
| 6492 | Lehmann, Ski-Rolf, Germany, tin, original box condition 1-2, condition 1-, | | | |
| 6493 | Lehmann, 'Hallo', Germany, 22 cm, Blech, Z 2, (2248) | | | 1100,00 EURO |
| 6494 | Lehmann, 'Hallo', Germany, tin, condition 2, | | | |
| 6495 | Lehmann, Auto-Onkel, 13 cm, Uhrwerk ok, Lackmängel, guter Originalzustand, | | | 690,00EURO |
| 6496 | Lehmann, "Auto-Onkel", windup ok, losses of paint, good original condition | | | |
| 6497 | Greppard/ Kelch, 'Ruck-Ruck' Motorrad, Germany, 16 cm, Blech, selten, 1930, Z 1-2, (2248) | | | 1200,00 EURO |
| 6498 | Greppard/ Kelch, 'Ruck-Ruck' motorbike, Germany, tin, rare, 1930, condition 1-2, | | | |
| 6499 | Lehmann, 'Adam' Kofferträger, Germany, H 20 cm, Blech, Uhrwerk ok, Z 2+, (2248) | | | |
| 6500 | Lehmann, 'Adam' luggage boy, Germany, tin, windup ok, condition 2+, | | | 1200,00 EURO |
| 6501 | TippCo, Beiwagenmotorrad 'Familie', Germany, 26 cm, Blech, Uhrwerk ok, 1930, Z 1-2, (2248) | | | 2900,00 EURO |
| 6502 | TippCo, sidecar motorbike 'Familie', Germany, tin, windup ok, 1930, condition 1-2, | | | |
| 6503 | Arnold, Aral-Zapfsäule, Germany, 18 cm, Blech, Z 1-2, (2248) | | | 1500,00 EURO |
| 6504 | Arnold, Aral-petrol pump, Germany, tin, condition 1-2, | | | |
| 6505 | Arnold, Aral-Tankstelle, Germany, 36 cm, Blech, Z 1, (2248) | | | 1200,00 EURO |
| 6506 | Arnold, Aral-petrol station, Germany, tin, condition 1, | | | |
| 6507 | Huki, Motorrad, US-Zone Germany, Blech, Uhrwerk ok, im sehr seltenen Okt., Z 1, (2248) | | | 1200,00 EURO |
| 6508 | Huki, motorbike, US-zone Germany, tin, windup ok, in very rare original box, condition 1, | | | |
| 6509 | 6500 | Japanischer LKW Sattelschlepper mit Anhänger, Japan, 54 cm, Blech, Friktion ok, Z 1, (1931) | | 140,00 EURO |
| 6510 | Japanese artic lorry with trailer, Japan, tin, friction ok, condition 1, | | | |



- | | | | |
|------|---|-------------|--|
| 6501 | K.O., 'Sparky Robot', Japan, 20 cm, Blech, Uhrwerk ok, Okt. Z 2-, Z 1, (1931) | | |
| 6502 | Bing, 'Sparky Robot', Japan, tin, windup ok, original box condition 2-, condition 1 | 290,00 EURO | |
| 6503 | Bing, Ozeandampfer, Germany, 33 cm, Blech, Uhrwerk ok, minimale Lackausbesserungen, sonst Z 1, (1931) | 300,00 EURO | |
| 6504 | Bing, Ocean liner, Germany, tin, windup ok, minimale repairs of paint, condition 1 | 50,00 EURO | |
| 6505 | Kran, 25 cm, Blech, Z 1-2, (1931) | 50,00 EURO | |
| 6506 | Modern Toys, Monorail-Bahn, Japan, 15 cm, Blech, Uhrwerk ok, minimal rostig, Z 2-, (1931) | 50,00 EURO | |
| 6507 | Modern Toys, Monorail Bahn, Japan, tin, windup ok, minimale rusty, condition 2- | 50,00 EURO | |
| 6508 | Modern Toys, japanischer Ozeandampfer, Japan, 35 cm, Blech, Uhrwerk ok, Z 1-2, (1931) | 70,00 EURO | |
| 6509 | Modern Toys, Japanese ocean liner. Japan, tin, windup ok, condition 1-2, | 90,00 EURO | |
| 6510 | JNF, Scalamobil, Germany, 9 cm, Blech, Funktion ok, sehr selten, Z 1-2, (1931) | 90,00 EURO | |
| 6511 | JNF, Scalamobil, Germany, tin, function ok, very rare, condition 1-2, | 150,00 EURO | |
| 6512 | Jamalchi, LKW-Sattelaufleger, Japan, 21 cm, Blech, Friktion ok, Okt. Z 3, Z 1-, (1931) | 150,00 EURO | |
| 6513 | Jamalchi, semi trailer, Japan, tin, friction ok, original box condition 3, condition 1- | 180,00 EURO | |
| 6514 | Bandai, Ferrari, Japan, 29 cm, Blech, Friktion ok, Riss in der Heckscheibe, Z 1-, (1913) | 180,00 EURO | |
| 6515 | Bandai, Ferrari, Japan, tin, friction ok, crack in rear window, condition 1- | 290,00 EURO | |
| 6516 | Sommermayer, Fernsteuerauto komplett in Ledertasche mit Steuertrafo und Bakelit-PKW, Gemischtbauweise, Technik nicht geprüft, Lackschäden, Okt. Z 2, sehr selten!, Z 2, (279) | 480,00 EURO | |
| 6517 | Sommermayer, remote controle car in leather bag with, mixed material, function not checked, original box condition 2, very rare!, condition 2, | 480,00 EURO | |
| 6518 | JH Höfler, Tankstellenspiel m. Rennwagen Nr.101, Blech, Uhrwerk ok, Okt. Z 2-3, Z 1-2, (279) | 120,00 EURO | |
| 6519 | JH Höfler, patrol station game No 101, tin, windup ok, original box condition 2-3, condition 1-2, | 120,00 EURO | |
| 6520 | GAMA, Kranauto Nr.285, W.Germanym 20 cm, Blech, Batterieantrieb nicht geprüft, minimale Lackschäden, Okt. Z 2, Z 2, (279) | 120,00 EURO | |
| 6521 | GAMA, crane car No 285, W.Germany, tin, batterie drive not checked, minimale losses of paint, original box condition 2, condition 2, | 120,00 EURO | |
| 6522 | ORGREB-Vetschau, Brummkreisel, DDR/ GDR, 17 cm, Gemischtbauweise, Funktion ok, Okt. Z 2, Z 2+, (279) | 25,00 EURO | |
| 6523 | ORGREB-Vetschau, Brummkreisel, GDR, mixed material, function ok, original box condition 2, condition 2+, | 40,00 EURO | |
| 6524 | Gescha, Schmetterling, Germany, 13 cm, Blech, Uhrwerk ok, (2213) | 40,00 EURO | |
| 6525 | Gescha, butterfly, Germany, tin, windup ok, Z 2, (2213) | 750,00 EURO | |
| 6526 | Distler, Limousine, 26 cm, Blech, Uhrwerk ok, Z 2, (2213) | 750,00 EURO | |
| 6527 | Dislter, limousine, tin, windup ok, condition 2, | 750,00 EURO | |
| 6528 | Rossignal, Limousine, France, 37 cm, Blech, Uhrwerk ohne Funktion, komplett neu lackiert, Kofferraumklappe lose. (2213) | 650,00 EURO | |
| 6529 | Rossignal, limousine, France, tin, windup not working, completely repainted, boot lid loose, | 650,00 EURO | |
| 6530 | Märklin, Brunnen, Germany, 19 cm, Blech, Okt. Z 2-3, Dach ersetzt, komplett?, Z 2, (2213) | 50,00 EURO | |
| 6531 | Märklin, font, Germany, tin, original box condition 2-3, roof replaced, complete?, condition 2, | 50,00 EURO | |
| 6532 | Bandai, Ferrari Gear Shift Car, Japan, 28 cm, Blech, Batterieantrieb ok, Okt. Z 1, Z 1, (2250) | 220,00 EURO | |
| 6533 | Bandai, Ferrari Gear Shift Car, Japan, tin, batterie drive ok, original box condition 1, condition 1, | 220,00 EURO | |
| 6534 | GAMA, Feuerwehr mit Anhänger, W.Germany, 35 cm, Blech, Okt. Z 1, Schlauchrolle fehlt, etwas rostig, Z 1-2, (2249) | 150,00 EURO | |
| 6535 | GAMA, fire brigade with trailer, W.Germany, tin, original box condition 1, host missing, little rusty, condition 1-2, | 150,00 EURO | |
| 6536 | Tippco, Ami-Limousine, U.S.Zone Germany, Blech, Uhrwerk ok, minimale Lackschäden, selten, Z 1-2 (1628) | 290,00 EURO | |
| 6537 | Tippco, American limousine, U.S.zone germany, tin, windup okay, minor paint damage, rare, condition 1-2 | 290,00 EURO | |
| 6538 | JNF/Neuhiert, Telecar Cabrio, US Zone Germany, Länge 45,5 cm, Blech, Uhrwerk ok., Lackierung mit minimalen Lackschäden, für Fernsteuerung, Z 1-2, (1628) | 290,00 EURO | |
| 6539 | JNFa/Neuhiert, Telecar Cabrio, US Zone Germany, tin, clock work driving, minor paint damag, for remote controle, condition 1-2, | 290,00 EURO | |



6521



6522



6523



6524



6525



6526



6527



6528



6529



6530



6531



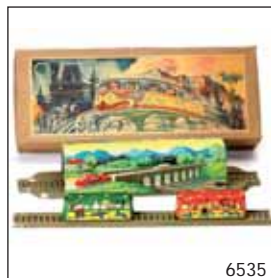
6532



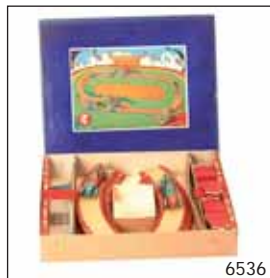
6533



6534



6535



6536



6537



6538



6539



6540

- 6521 Schuco, Tacho-Examico 4002, US Zone Germany, Länge ca 15,5 cm, Blech, Uhrwerk, minimale Lackschäden, Funktionen ok., eine Schramme am Kühler, Z 2-3, (1628)
 Schuco, Tacho-Examico 4002, US Zone Germany, tin, clock work, minor paint damage, function working, condition 2-3, 310,00 EURO
- 6522 Arnold, Flugzeug, SAS-DC 4, West-Germany, Länge 25 cm, Blech, Batterieantrieb, Lackschäden, Funktionen ok., Heckrad fehlt, Z 2, (1628)
 Arnold, airliner, SAS-DC 4, West-Germany, tin, battery drive working, paint damage, function working, rear wheel missing, condition 2, 190,00 EURO
- 6523 Gama, Weltraumpanzer 9940, West-Germany, Länge ca 20 cm, Blech, Batterieantrieb, minimale Lackschäden, Antenne und 1 Lampe und Farbkugel fehlen, Z 3+, (1628)
 Gama, airspace-armor 9940, West-Germany, tin, battery drive working, minor paint damage, aerial and 1 lamp missing, condition 3+, 50,00 EURO
- 6524 Schuco, Sonny Mouse 2005, US Zone Germany, Blech, Uhrwerk ok., Z 1, (1628)
 Schuco, Sonny Mouse 2005, US Zone Germany, tin, clock work driving, varnish perfect, condition 1, 310,00 EURO
- 6525 ASC, Chevrolet Impala, Japan, 26 cm, Blech, Friktion ok, Z 1-, (1628)
 ASC, Chevrolet Impala, Japan, tin, friction ok, condition 1-, 70,00EURO
- 6526 Prämeta, Jaguar, Brit-Zone Germany, 15 cm, Druckguss, Uhrwerk ok, Okt. Z 2-3, 1 Lasche fehlt, minimaler Rost unter dem rechten Scheinwerfer, Z 1-2, (1628)
 Prämeta, Jaguar, Brit-zone Germany, diecast, clockwer ok, original box condition 2-3, 1 clip missing, minimale rusty under right light, condition 1-2, 0,00EURO
- 6527 Schuco, Synchronatic, W.Germany, 27 cm, Uhrwerk ok, Okt. Z 1, Z 1, (1658)
 Schuco, Synchronatic, W.Germany, windup ok, original box condition 1, condition 1, 720,00EURO
- 6528 Kellermann, Mercedes Sattelschlepper Nr.387, W.Germany, L 48,5 cm, Blech, Batterieantrieb ok, in Originalkartonboden, unbespielt, Z 1-2, (482)
 Kellermann, Mercedes artic lorry No 387, W.Germany, tin, batterie drive ok, in original box bottom, unused, condition 1-2, 860,00 EURO
- 6529 KCO/Kellermann, Motorrad mit MG-Beiwagen, DRGM Germany, Blech, Uhrwerk Feder defekt, Lackierung perfekt, Z 1-2, (482)
 KCO/Kellermann, motor bike with mg-sidecar, DRGM Germany, tin, clock work spring damaged, varnish perfekt, condition 1-2, 220,00 EURO
- 6530 Huki, Opel Caravan 'ADAC', West-Germany, ca 22 cm, Blech, Friktion ok., Lackierung perfekt, Funktionen ok., Z 1, Okt. perfekt, (482)
 Huki, Opel Caravan 'ADAC', West-Germany, tin, friction drive working, varnish perfect. function ok., condition 1, original box perfect, 185,00 EURO
- 6531 Biller, Boxer-Spiel, 'Shugger Champions', West-Germany, ca 9 x 9 cm, Blech, Uhrwerk ok., Lackierung perfekt, Z 1-2, mit Schlüssel, (482)
 Biller, boxer-game, 'Shugger Champions', West-Germany, tin, clock work driving, varnish perfect, condition 1-2, with key, 145,00 EURO
- 6532 Günthermann, Limousine SG-No 870M, West-Germany, 27 cm, zwelfarbig original lackiert, nickelverziert, Blech, Batterieantrieb ok., Lackierung perfekt, sehr selten, Z 1-2, unbespielt, (482)
 Günthermann, Limousine SG-No 870M, West-Germany, bicoloured varnish, tin, battery driv working, varnish perfect, very rare, condition 1-2, mint, 220,00 EURO
- 6533 P.Niedermeier, Sportcabrio PN 340, West-Germany, 14,5 cm, Friktion ok., minimale Lackschäden, Z 1-2, (482)
 P.Niedermeier, Sportcabrio PN 340, West-Germany, friction drive working, minor paint damage, condition 1-2, 85,00 EURO
- 6534 Wüco Roter Pfeil (Rennwagen), Western Zone Germany, Blech, Friktion, Rollbetrieb, perfekte Lackierung, Funktion ok, selten, unbespielt (482)
 Wüco Red Arrow (racing car), Western Zone Germany, plate, friction, perfect paint, function ok, rare, mint 120,00 EURO
- 6535 Technofix Geisterbahn, Germany, 30x15x39cm, Blech, Uhrwerk ok, Okt, Z 1 (482)
 Technofix ghost train, germany, tin, clockwork okay, original box, condition 1, 280,00 EURO
- 6536 Tippco Bahn 793, US Zone Germany, 27 x 32 cm, Okt. Z 1, (482)
 Tippco Bahn 793, US Zone Germany, original box, condition 1, 240,00 EURO
- 6537 Huki, Limousine, 13cm, minimale Lackschäden, Donald im Rückfenster, Z1, (482)
 Huki, Limousine, 13cm, small paint damage, Donald in the back window, condition 1 120,00 EURO
- 6538 Technofix Gespensterbahn, US Zone Germany, Blech, Uhrwerk ok., selltener Okt., unbespielt(482)
 Technofix ghost train, US Zone Germany, tin, clockwork ok, rare original carton, mint condition 260,00 EURO
- 6539 Güntermann Dampflok mit Zug, Nr. 835, 30cm, Blech, Uhrwerk ok., unbespielt, Z 1-2, (482)
 Güntermann steam engine with train, Nr. 835, 30cm, tin, clockwork ok., mint condition 1-2 200,00 EURO
- 6540 Höfler/J.H., Shell-Garagenbahn Nr. 101, mit Uhrwerkauto, Western Germany, Blech, Uhrwerk ok, Okt, unbespielt mit original Anleitung, Z 1 (482)
 Höfler/J.H., Shell garage game no. 101, with windup automobile, western germany, tin, windup okay, original packaging, with original instruction, condition 1 240,00 EURO



- 6541 Günthermann/S.G., Radarsuchgerät auf Raupen Nr. 900N, bzw. 903, mit 2 Nato Soldaten, Western Germany, Blech, Uhrwerk ok, minimale Lackschäden, Z 1-2 (482)
Günthermann/ S.G., radar detector no. 900N / 903, with 2 NATO soldiers, western germany, tin, windup okay, minor paint damage, condition 1-2 120,00 EURO
- 6542 Schuco, Porsche Targa 9115 Nr.1081, Germany, Kunststoff, Uhrwerk ok, minimale Lackschäden am Boden, Z 1-2, (482)
Schuco, Porsche Targa 9115 No 1081, Germany, plastic material, windup ok, minimala losses of paint at bottom, condition 1-2, 145,00 EURO
- 6543 GAMA, Opel Record Nr.462, Kunststoff/ Blech, Uhrwerk ok, 22 cm, Z 1,
GAMA, Opel Record 1963, plastic material/ tin, windup ok, condition 1, 165,00EURO
- 6544 Marx, Zirkuspferd mit Musikwalze, USA, 25 cm, Blech, Zugspiel, Okt. Z 1-2, Z 1-2, (482)
Marx, circus horse with music, USA, tin, original box condition 1-2, condition 1-2, 95,00 EURO
- 6545 Technofix, 2 Schienenfahrzeuge für ältere Bahnen, Germany VK, L 7,5/8,5 cm, Blech, Uhrwerk ok, Lackschäden, Z 2-3, (482)
Technofix, 2 older railway vehicles, Germany ore war, tin, windup ok, losses of paint, condition 2-3, 60,00 EURO
- 6546 Alps, Hund mit Karre, Japan, Länge 34 cm, Gemischtbauweise, Batterieantrieb ok, Z 1-, (1648)
Alps, dog with trailer, Japan, mixed material, batterie drive ok, condition 1-, 50,00 EURO
- 6547 NBN, Ente auf Dreirad, W.Germany, 21 cm, Uhrwerk ok, Okt. Z 2-, Original der 60er Jahre, Z 2, (1648)
NBN, duck on trike, W.Germany, windup ok, original box condition 2-, original of the 60ies, condition 2, 60,00 EURO
- 6548 Lincoln, Isetta, Empire made, 9 cm, Kunststoff, Friktion ok, Okt. Z 1-, Z 1-, (1648)
Lincoln, Isetta, Empire-made, plastic material, friction ok, original box condition 1-, condition 1-, 50,00 EURO
- 6549 Clown Skater, Japan, 15 cm, Blech, Uhrwerk ok, Z 1-, (1648)
Clown Skater, Japan, tin, windup ok, condition 1-, 50,00 EURO
- 6550 Carl?, Clown in Box, W.Germany, Box 11x11 cm, Gemischtbauweise, Z 2, (1648)
Carl?, Clown in box, W.Germany, mixed material, condition 2, 30,00 EURO
- 6551 Karussell, W.Germany, 28 cm, Blech, eine Gondel-Aufhängung defekt, Z 2-, (1648)
Carussell, W.Germany, tin, 1 gondula-attachment broken, condition 2-, 90,00 EURO
- 6552 Voith, Raketen-Bahn, W.Germany, Box 15x25 cm, Blech, Okt. Z 3-, Z 2+, (1648)
Voith, rocket-channel, W.Germany, tin, orignal box condition 3-, condition 2+ 150,00 EURO
- 6553 Höfler, Kirmes Bahn, Germany, 24 cm, Lackschäden, Okt. Z 4, Seiten fehlen, Fahrzeug fehlt, Z 3, (1648)
Höfler, fair tram, Germany, losses of paint, original box condition 4, clops missing, vehicle missing, condition 3, 70,00 EURO
- 6554 Krokodil, Germany, 38 cm, Blech, Uhrwerk ok, Z 1-, (1648)
Crocodile, Germany, tin, windup ok, condition 1-, 35,00 EURO
- 6555 Lincoln, Jaguar und Rolls Royce, Empire-made, je 15 cm, Blech, Kunststoff, Friktion ok, Okt. Z 1-2, + Z 4, Z 1, (1648)
Lincoln, Jaguar and Rolls Royce, Empire-made, tin, plastic material, friction ok, original box condition 1-2, + condition 4, condition 1, 40,00 EURO
- 6556 Huki, Porsche Polizei, W.Germany, 21 cm, Blech, Friktion ok, Okt. Z 1, Z 1, (1648)
Huki, Porsche police, W.Germany, tin, friction ok, orignal box condition 1, condition 1, 60,00 EURO
- 6557 SY + andere, 2 Helicopter, Japan, je 25 cm, Blech, Uhrwerk ok, Okt. Z 1, 1 Rotorblatt defekt, sonst Z 1-2, (1648)
SY + others, 2 helicopters, Japan, tin, windup ok, original box condition 1, 1 rotor blade broken, elsewise condition 1-2, 40,00 EURO
- 6558 HK, Helicopter, W.Germany, 26 cm, Blech, Uhrwerk ok, Okt. Z 1-, Z 1-, (1648)
HK, helicopter, W.Germany, tin, windup ok, original, box condition 1-, condition 1-, 60,00 EURO
- 6559 GAMA, Tank, W.Germany, 16 cm, Blech, Uhrwerk ok, 1 Kette defekt, Z 2-, (1648)
GAMA, tank, W.Germany, tin, clockwer ok, 1 chain broken, condition 2-, 70,00 EURO
- 6560 Huki, Porsche, Jaguar, VW Käfer, W.Germany, je 15 cm, Blech, Friktion ok, Okt. Z 1, Z 1, (1648)
Huki, Porsche, Jaguar, VW Käfer, W.Germany, tin, friction ok, original box condition 1, condition 1, 50,00 EURO



6561



6562



6563



6564



6565



6566



6567



6568



6569



6570



6571



6572



6573



6574



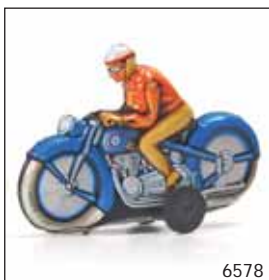
6575



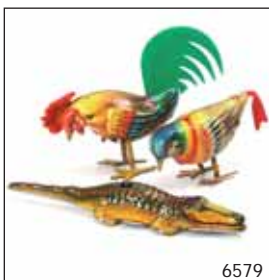
6576



6577



6578

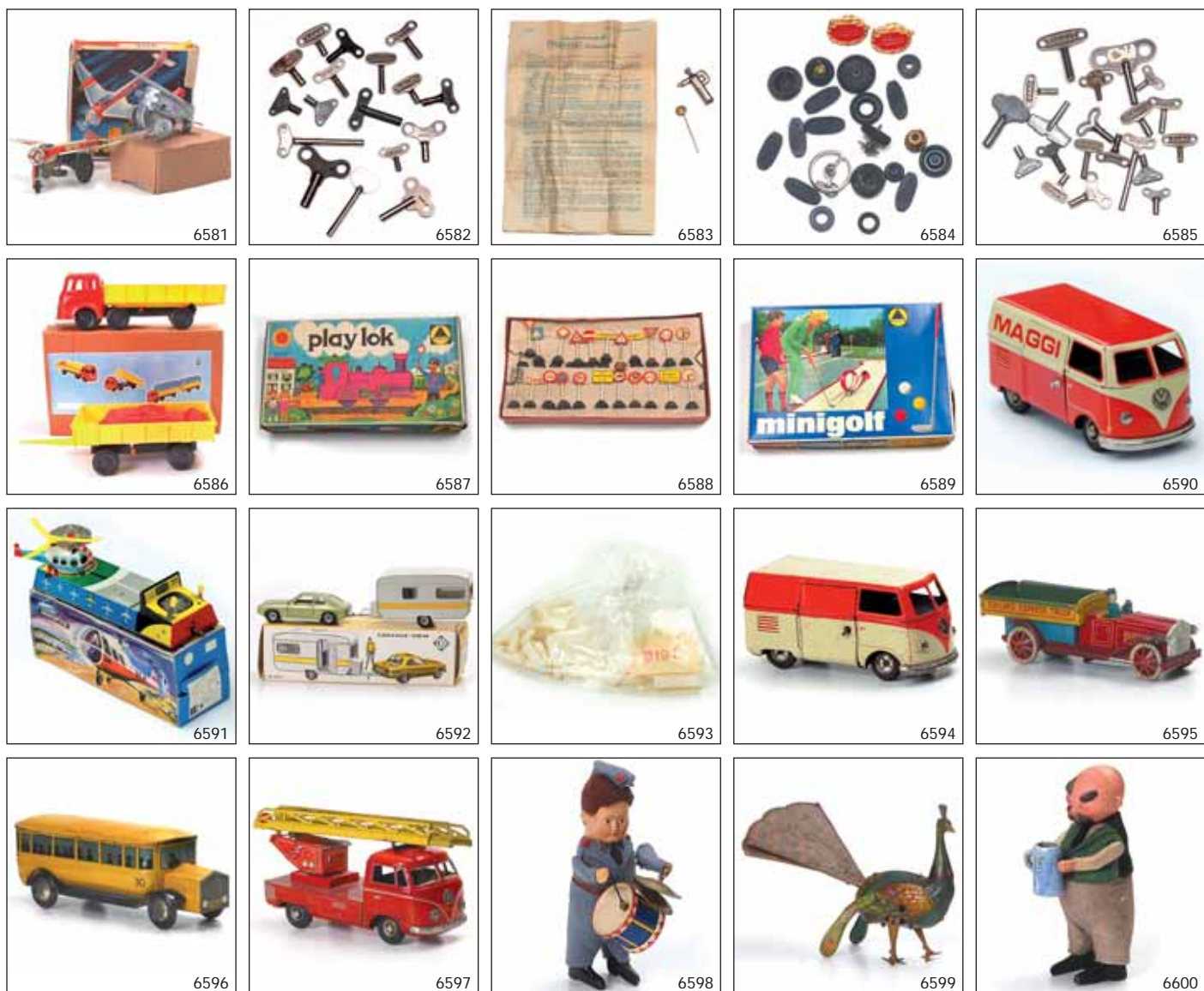


6579



6580

- 6561 Köhler, Karussell, Germany, 28 cm, Blech, Uhrwerk ok, Spieluhr hängt manchmal, Z 1-2, (710) 270,00 EURO
- 6562 Köhler, Carussell, Germany, tin, windup ok, musical clock sometimes stucked, condition 1-2, 270,00 EURO
- 6562 Arnold, MAN LKW/ Holztransporter, Germany, 25 cm, Gemischtbauweise Kunststoff, Blech, Lampen ersetzt, Auspuff geklebt, Z 2, (710) 290,00 EURO
- Arnold, MAN truck/ wood transport, Germany, mixed material tin & plastic, lights replaced, exhaust glued, condition 2,
- 6563 Wasserwagen, Germany, 26 cm, Blech, nicht komplett, uralt, Z 3-4, (710) 60,00 EURO
- water tank, Germany, tin, not complete, very old, condition 3-4,
- 6564 Lehmann, Doppelgarage 772, Germany, 17 cm breit, Blech, Z 2, (710) 100,00 EURO
- Lehmann, double garage 772, Germany, tin, condition 2,
- 6565 Distler, Tankstelle, Blech, Germany, 17 cm, Z 2+, (710) 65,00 EURO
- Distler, patrol station, tin, Germany, condition 2+,
- 6566 ASC, Batmobile, Japan, 30 cm, Kunststoff, Funktion nicht geprüft, Okt. Z 2, 1 Raketenrohr fehlt, sonst Z 1, (1628) 210,00 EURO
- ASC, Batmobile, Japan, plastic material, function not checked, original box condition 2, 1 rocket missing, the rest condition 1,
- 6567 SSS, großer Betonmischer, Japan, 48 cm, Blech, rostig, Deckel an Mischbehälter fehlt, Z 3+, (1672) 160,00 EURO
- SSS, big concrete truck, Japan, tin, rusty, lid of concrete barrow missing, condition 3+,
- 6568 Fleischmann, 3 Antriebsmodelle Schmie Nr.232/ Ventilator 211/ Windmühle 210, Germany, Blech, Okt. Z 1, unbespielt, Z 1, (482) 80,00 EURO
- Fleischmann, 3 Antriebsmodelle Schmie No 232/ Fan 211/ mill 210, Germany, tin, original box condition 1, condition 1,
- 6569 Bandai, Cadillac Cabrio, Japan, 44 cm, Blech, 1 Rückspiegel fehlt, Kofferraumabdeckung nicht original, Z 3-, (2246) 45,00 EURO
- Bandai, Cadillac Cabrio, Japan, tin, mirror missing, boot lid not original, condition 3-,
- 6570 Jouets Renault, France, 30 cm, Blech, Uhrwerk nicht geprüft, linke Lampe lose, Lack original?, Z 3+, (2246) 45,00 EURO
- Jouets Renault, France, tin, windup not checked, left light loose, painting original?, condition 3+,
- 6571 Schuco, Elektro Phänomenal, Germany, 21 cm, Blech, Batterieantrieb nicht geprüft, Motor rostig, Z 3, (2246) 45,00 EURO
- Schuco, Elektro Phänomenal, Germany, tin, batterie drive not checked, motor rusty, condition 3,
- 6572 Günthermann, Buick Combi, Germany, 25 cm, Blech, Heckklappe + Emblem vorne fehlen, Z 3-, (2246) 45,00 EURO
- Günthermann, Buick Combi, Germany, tin, boot lid + front-emblem missing, condition 3-,
- 6573 JEP, Limousine, France, Blech, rechte Tür lose, Lötstellen, 34 cm Z 3-4, (2246) 45,00 EURO
- JEP, limousine, France, tin, right door loose, soldered points, 34 cm condition 3-4,
- 6574 Jone u.a., Reiter, 3 Blechflöten, Japan, 12 cm, Blech, Friktion ok, Z 2+, (1648) 15,00 EURO
- Jone and others, rider, 3 tin whistle, Japan, tin, friction ok, condition 2+,
- 6575 Huki, Flieger + Motorrad, US-Zone Germany, je 10 cm, Blech, Friktion ok, Z 1-2, (1648) 20,00 EURO
- Huki, plane + motor bike, US-zone Germany, tin, friction ok, condition 1-2,
- 6576 4x Blechspielzeug, Japan/ China, Blech, Uhrwerk/ Friktion ok, 4x Okt. Z 1-2, Z 1, (1648) 50,00 EURO
- 4x tin toys, Japan/ China, windup/ friction ok, 4x original box condition 1-2, condition 1,
- 6577 Huki, 2 Porsche, W.Germany, 21 cm, Blech, Batterieantrieb nicht geprüft, Okt. Z 1, Z 1, (1648) 45,00 EURO
- Huki, Porsche, W.Germany, tin, batterie drive not checked, original box condition 1, condition 1,
- 6578 Niedermeier, Motorrad, W.Germany, 17 cm, Blech, Friktion ok, Z 1, (1648) 25,00 EURO
- Niedermeier, motor bike, W.Germany, tin, friction ok, condition 1,
- 6579 Köhler, 2 Vogel, Krokodil, Germany, 7-13 cm, Blech, 2x Uhrwerk ok, Z 1-2, (1648) 25,00 EURO
- Köhler, 2 birds, crocodile, Germany, tin, 2x windup ok, condition 1-2,
- 6580 ME, Jaguar + Bus, China/ Japan, 14/ 15 cm, Blech, Friktion ok, Batterieantrieb ohne Funktion, Z 2-, (1648) 20,00 EURO
- ME, Jaguar + Bus, Japan/ China, tin, Friktion ok, batterie drive not working, condition 2-,



- | | | |
|------|---|--------------|
| 6581 | MM, Flieger/ kleiner Überschlagflieger, Germany, 9-15 cm, Blech, Uhrwerk ok, Okt. Z 2-, Z 1/ 2-, (1648)
MM, plane, little turning plane, Germany, tin, windup ok, original box condition 2-, condition 1/ 2-, | 40,00 EURO |
| 6582 | Gama/ Technofix/ B&S etc. , Konvolut Uhrwerkschlüssel, Germany, (311)
GAMA/ Technofix/ B&S and others, Convolute windup keys, Germany, | 15,00 EURO |
| 6583 | Prämeta, Schlüsselpolizist, Anleitung, Jaguar-Anstecknadel, (311)
Prämeta, Schlüsselpolizist, Instruction, Jaguar-button, | 25,00 EURO |
| 6584 | Konvolut Ersatzteile, 2 Schuco-Anstecknadeln etc. , (311)
Convolute spare pieces, 2 Schuco-buttons and others, | 20,00 EURO |
| 6585 | Konvolut Schlüssel, (311)
Convolute keys, | 10,00 EURO |
| 6586 | Seidel LKW mit Anhänger, W-Germany, 98cm, Blech/Kunststoff, Okt., Z 1, (297)
Seidel Truck with hanger, W-Germany, 98cm, tin/plastic, original carton, condition 1 | 120,00 EURO |
| 6587 | Technofix Play Lok 337, W-German, neu und komplett, Okt., Z 1, (297)
Technofix Play Lok 337, W-Germany, new and complete, original carton, condition 1 | 35,00 EURO |
| 6588 | großer Karton Verkehrszeichen, Germany, je 15 cm, Blech, Lackschäden, gemischter Zustand, (246)
large box traffic signs, Germany, tin, losses of paint, mixed condition | 320,00EURO |
| 6589 | Technofix, Minigolf, Germany, 40x55 cm, Okt. Z 1, Z 1, (246)
Technofix, minigolf, Germany, original box condition 1, condition 1, | 100,00EURO |
| 6590 | Göso, VW-Bus, Germany, 18 cm, Blech, Uhrwerk ok, MAGGI-Werbemodell, sehr selten, Z 2, (2252)
Göso, VW-Bus, Germany, tin, windup ok, MAGGI-promotion modell, very rare!, condition 2, | 1900,00 EURO |
| 6591 | Huki, Helicopter-Spiel, Germany, 16 cm, Blech, Uhrwerk ok, Okt. Z 1-2, Z 1-, (1648)
Huki, helicopter-game, Germany, tin, windup ok, original box condition 1-2, condition 1-, | 80,00 EURO |
| 6592 | Kellermann, Ford Capri mit Caravan, Germany, 28 cm, Blech, Friktion ok, minimale Lackschäden, Okt. Z 1-2, Z 1-2, (1462)
Kellermann, Ford Capri with Caravan, Germany, tin, friction ok, minimale losses of paint, original box condition 1-2, condition 1-2, | 50,00 EURO |
| 6593 | Tippco, Kästen und Milchflaschen für VW Transporter, Kunststoff, Z 1, (1462)
Tippco, boxes and milkbottles for VW transport, plastic material, condition 1, | 30,00 EURO |
| 6594 | Göso, VW Bus, Blech, Uhrwerk ohne Funktion, Z 3+, (1462)
Göso, VW Bus, tin, windup not working, condition 3+, | 80,00 EURO |
| 6595 | Gely, Toyland Express Truck, Germany VK, 27 cm, Blech, Uhrwerk ok, Z 1-2, (2219)
Gerly, Toyland Express truck, Germany, tin, windup ok, condition 1-2, | 1400,00 EURO |
| 6596 | Candy container Bus, 55 cm, Blech, minimale Lackschäden, 30er/ 40er Jahre, Z 2, (2219)
Candy container bus, tin, minimale losses of paint, 30ies/ 40ies, condition 2, | 1500,00 EURO |
| 6597 | Tippco, VW Bus Feuerwehr, W-Germany, Blech, Friktion ok, Lackschäden, Z 2-3, (754)
Tippco, VW Bus fire brigade, W.Germany, tin, friction ok, losses of paint, condition 2-3, | 320,00 EURO |
| 6598 | Schuco, Soldat mit Trommel, Germany, 13 cm, Uhrwerk ok, Mütze beschädigt, sonst Z 1-2, (754)
Schuco, soldier with drum, Germany, windup ok, hat damaged, otherwise condition 1-2, | 200,00 EURO |
| 6599 | Blömer und Schüller, Pfau, Germany, VK, 21 cm, Blech, Uhrwerk ok, minimale Lackschäden, Z 2, (754)
Blömer und Schüller, Pfau, Germany, pre war, tin, windup ok, minimale losses of paint, condition 2, | 350,00 EURO |
| 6600 | Schuco, Vater mit Bierkrug, Germany, VK, 12 cm, Uhrwerk ok, Kopf schmutzig, sonst Z 1-2, (754)
Schuco, Vater mit Bierkrug, Germany, pre war, windup ok, head dirty, otherwise condition 1-2, | 330,00 EURO |



6601



6602



6603



6604



6605



6606



6607



6608



6609



6610



6611



6612



6613



6614



6615



6616



6617



6618



6619



6620

- | | | | | |
|------|---|-------------|--|--|
| 6601 | Schuco, Clown mit Bällen, W.Germany, 12 cm, Uhrwerk ok, Hände beschädigt, sonst Z 1-2, (754) | | | |
| | Schuco, clown with balls, W.Germany, windup ok, hands damaged, the rest condition 1-2, | 170,00 EURO | | |
| 6602 | Schuco, Flugzeug mit Affe, Germany, VK, 10 cm, Blech, Lackschäden, Z 3-, (754) | | | |
| | Schuco, plane with ape, Germany, pre war, tin, losses of paint, condition 3, | 230,00 EURO | | |
| 6603 | Schuco, Rolly Bär, W-Germany, 21 cm, Uhrwerk ok, Z 1-2, (754) | | | |
| | Schuco, Rolly Bär, W-Germany, windup ok, condition 1-2, | 450,00 EURO | | |
| 6604 | Schuco, Rolly Clown, Germany, 21 cm, Uhrwerk ok, Gesicht rissig, Z 2-, (754) | | | |
| | Schuco, Rolly Clown, Germany, windup ok, face cracked, condition 2-, | 320,00 EURO | | |
| 6605 | B+S, LKW mit Hebebühne, W.Germany, 36 cm, Blech, Friktion ok, minimale losses of paint, Z 2-, (754) | | | |
| | B+S, truck with lift, W.Germany, tin, friction ok, minimale losses of paint, condition 2-, | 260,00 EURO | | |
| 6606 | Bing, Garage mit 2 Autos, Germany, Autos je 15 cm, Blech, Uhrwerk ohne Funktion, Lackschäden, Z 3-, (754) | | | |
| | Bing, garage and 2 cars, Germany, tin, windup not working, losses of paint, condition 3-, | 290,00 EURO | | |
| 6607 | Schuco, Purzel-Bär, Germany, 10 cm, Uhrwerk ok, Z 1-, (754) | | | |
| | Schuco, Purzel-Bär, Germany, windup ok, condition 1-, | 280,00 EURO | | |
| 6608 | EHN, 2 Musik-Clowns, Germany 22 cm, Uhrwerk ok, Lackschäden, Mechanik hakt, Z 2-3, (754) | | | |
| | EHN, 2 music clowns, Germany, windup ok, losses of paint, mechanic stucked, condition 2-3, | 320,00 EURO | | |
| 6609 | Tippco, Airlines-Flugzeug, US-Zone Germany, 23 cm, Blech, Uhrwerk ok, Lackschäden, Z 2-, (754) | | | |
| | Tippco, Airlines-airplane, US-zone Germany, tin, windup ok, losses of paint, condition 2-, | 200,00 EURO | | |
| 6610 | Schuco, Mirakomot Motorrad, US-Zone Germany, 13 cm, Blech, Uhrwerk ok, minimale Lackschäden, Z 2, (754) | | | |
| | Schuco, Mirakomot motor bike, US-zone Germany, tin, windup ok, minimale losses of paint, condition 2, | 190,00 EURO | | |
| 6611 | GAMA, Kipp LKW, Germany VK, Blech, Friktion ok., Z 1-, (2177) | | | |
| | GAMA, truck, Germany pre war, tin, friction ok, condition 1-, | 200,00 EURO | | |
| 6612 | ML Paris, Rennwagen, France, 27 cm, Blech, Uhrwerk ok, 20er Jahre, Z 2-, (2177) | | | |
| | ML Paris, racing car, France, tin, windup ok, 20ies, condition 2-, | 200,00 EURO | | |
| 6613 | Marx, Rennwagen, USA, Blech, Uhrwerk ok, Fahrer fehlt, Z 3-, (2177) | | | |
| | Marx, USA, tin, windup ok, driver missing, condition 3-, | 120,00 EURO | | |
| 6614 | Höfler, kleiner Bus, Germany VK, 16 cm, Blech, Uhrwerk ok, nicht komplett, Z 3-4, (2177) | | | |
| | Höfler, small bus, Germany pre war, tin, windup ok, not complete, condition 3-4, | 120,00 EURO | | |
| 6615 | TippCo, kleiner Rennwagen, US-Zone Germany, 17 cm, Blech, Uhrwerk ok, Z 1-, (2177) | | | |
| | TippCo, small racing car, US-Zone Germany, tin, clockwer ok, condition 1-, | 120,00 EURO | | |
| 6616 | Orobro, Limousine, Germany, 16 cm, Blech, Uhrwerk ok, 20er Jahre, Z 1-2, (2177) | | | |
| | Orobro, limousine, Germany, tin, windup ok, 20ies, condition 1-2, | 400,00 EURO | | |
| 6617 | GAMA, Feuerwehr, Germany, 30 cm, Gemischtbauweise Blech/Kunststoff, Friktion ok, Okt. Z 2-, Pumpe ok, 1 Radkappe ersetzt, Z 2, (2177) | | | |
| | GAMA, fire brigade, Germany, tin, friction ok, original box condition 2-, pumper ok, 1 wheel-cover replaced, condition 2, | 240,00 EURO | | |
| 6618 | GAMA, rotes Kreuz LKW, US-Zone Germany, 23 cm, Blech, Friktion ok, Okt. Z 1-, Bahre fehlt, Z 1-, (1667) | | | |
| | GAMA, rotes Kreuz truck, US-Zone Germany, tin, friction, original box condition 1-, stretcher missing, condition1-, | 130,00 EURO | | |
| 6619 | TippCo, Militär police, W.Germany, 19 cm, Blech, Friktion ok, Z 1-, (1667) | | | |
| | TippCo, military police, W.Germany, tin, friction ok, condition 1-, | 35,00 EURO | | |
| 6620 | GAMA, Patent-Auto 100, US-Zone Germany, 17 cm, Blech, Uhrwerk ok, Antriebsrad hakt, Z 1, (1667) | | | |
| | GAMA, Patent-Auto 100, US-Zone Germany, tin, windup ok, drive stucked, condition 1, | 70,00 EURO | | |



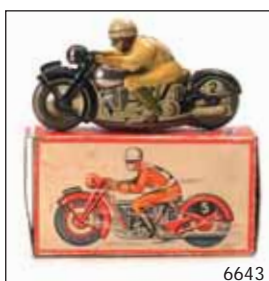
- | | | | |
|------|--|--------------|--|
| 6621 | DUX, Mercedes, Germany, Blech, 13 cm, Uhrwerk ok, Z 1-, (1667) | | |
| | DUX, Mercedes, Germany, tin, windup ok, condition 1, | 90,00 EURO | |
| 6622 | Lehmann, Em Ge 735, Germany VK, 15 cm, Blech, Z 1-, (1667) | | |
| | Lehmann, Em Ge 735, Germany pre war, tin, condition 1-, | 120,00 EURO | |
| 6623 | Martin, Feuerwehrmann, France, 21 cm, Blech, Uhrwerk ohne Funktion, Leiter fehlt, (1667) | | |
| | Martin, fire brigade, France, tin, windup not working, ladder missing, | 150,00 EURO | |
| 6624 | Günthermann, springender Hund, Germany, 13 cm, Blech, Uhrwerk ok, Z 2-3, (1667) | | |
| | Günthermann, jumping dog, Germany, tin, windup ok, condition 2-3, | 150,00 EURO | |
| 6625 | Schuco, Varianto 3010, Germany, Blech, Uhrwerk ok, Okt. Z 2, Z 2, (1667) | | |
| | Schuco, Varianto 3010, Germany, tin, windup ok, original box condition 2, condition 2, | 70,00 EURO | |
| 6626 | Fußballspiel, Germany, 31 cm, Blech, Okt. Z 3, Z 2, (1667) | | |
| | footballgame, Germany, tin, original box condition 3, condition 2, | 40,00 EURO | |
| 6627 | Lehmann, 'Dare Davil', Esel mit Mexikaner, Germany, 18 cm, Blech, Uhrwerk ok, Z 2-, (2248) | | |
| | Lehmann, 'Dare Devil', donkey and mexican, Germany, tin, windup ok, condition 2-, | 300,00 EURO | |
| 6628 | Lehmann, Auto 'aha', Germany, 14 cm, Blech, Antrieb ohne Funktion, Z 2-, (2248) | | |
| | Lehmann, car 'aha', Germany, tin, drive not working, condition 2-, | 550,00 EURO | |
| 6629 | NBN, musizierende Clowns, Germany, Blech, Z 2, (2248) | | |
| | NBN, music clowns, Germany, tin, condition 2, | 240,00 EURO | |
| 6630 | Huki, VW Käfer, Germany, 213 cm, Blech, Uhrwerk ok, Okt. Z 1, Z 1, (2248) | | |
| | Huki, VW Käfer, Germany, tin, windup ok, original box condition 1, condition 1, | 600,00 EURO | |
| 6631 | Huki, VW Käfer, Germany, 13 cm, Blech, Uhrwerk ok, Okt. Z 1, Z 1, (2248) | | |
| | Huki, VW Käfer, Germany, tin, windup ok, original box condition 1, condition 1, | 600,00 EURO | |
| 6632 | Prämeta, Opel Kapitain blau-metallic, Germany, Druckguss, Uhrwerk ok, Okt. Z 3, Laschen fehlen, Z 1-, (2248) | | |
| | Prämeta, Opel Kapitain blue-metallic, Germany, diecast, clockwork ok, original box condition 3, clips missing, condition 1-, | 300,00 EURO | |
| 6633 | Prämeta, Mercedes grün, Germany, Druckguss, Uhrwerk ok, Stern fehlt, Z 2+, (2248) | | |
| | Prämeta, Mercedes green, Germany, diecast, windup ok, star missing, condition 2+, | 200,00 EURO | |
| 6634 | Schuco, Examico, US-Zone Germany, 16 cm, Blech, Uhrwerk ok, Okt. Z 2, Tacho fehlt, Z 2, (2248) | | |
| | Schuco, Examico, US-Zone Germany, tin, windup ok, original box condition 2, speedometer missing, condition 2, | 390,00 EURO | |
| 6635 | Kellermann, Raupe 'Montana' mit Anhänger, Germany, 22 cm, Blech, Uhrwerk ok, Kette fehlt, Z 2-, (2248) | | |
| | Kellermann, caterpillar 'Montana' with trailer, Germany, tin, windup ok, chain missing, condition 2-, | 90,00 EURO | |
| 6636 | Schuco, Rollfix, Germany, 25 cm, Blech, Antrieb ok, Z 1-, (2248) | | |
| | Schuco, Rollfix, Germany, tin, drive ok, condition 1-, | 1500,00 EURO | |
| 6637 | Marusan, Chevrolet BelAir, Japan, 29 cm, Blech, Friktion ok, minimale Lackschäden, 1955, Z 2, (2248) | | |
| | Marusan, ChevroletBelAir, Japan, tin, friction ok, minimale losses of paint, 1955, condition 2, | 790,00 EURO | |
| 6638 | GAMA, Cadillac, Germany, 32 cm, Friktion ok, Lackschäden, Z 2-, (2248) | | |
| | GAMA, Cadillac, Germany, tin, friction ok, losses of paint, condition 2-, | 190,00 EURO | |
| 6639 | Yone, Olds-Mobile, Japan, 43 cm, Blech, Friktion ok, minimale Lackschäden, 1960, Z 2, (2248) | | |
| | Yone, Olds-Mobile, Japan, tin, friction ok, 1960, condition 2, | 1300,00 EURO | |
| 6640 | TN, VW Cabrio, Japan, 25 cm, Blech, Lackschäden, Z 3+, (2248) | | |
| | TN, VW Cabrio, Japan, tin, losses of paint, condition 3+, | 120,00 EURO | |



6641



6642



6643



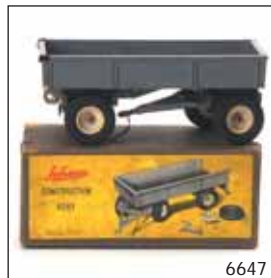
6644



6645



6646



6647



6648



6649



6650



6651



6652



6653



6654



6655



6656



6657



6658



6659



6660

- | | | | | |
|------|---|--------------|--|--|
| 6641 | TippCo, Mercedes 220 Limousine, Germany, 31 cm, Blech, neutraler Okt. Z 1, Chrom angelaufen, sonst Z 1, (2248) | | | |
| | TippCo, Mercedes 220 limousine, Germany, tin, simple original box condition 1, chrome accrued, elsewhere condition 1, | 2200,00 EURO | | |
| 6642 | Schuco, Curvo Werbemodell Zundapp, Germany, Blech, Uhrwerk ok, Z 1, (2183) | | | |
| | Schuco, Curvo merchandising modell, tin, windup ok, condition 1, | 1500,00 EURO | | |
| 6643 | Schuco, Sport, Germany VK, 13 cm, Blech, Uhrwerk ok, Okt. , Z 1, (1410) | | | |
| | Schuco, Sport, Germany pre war, tin, windup ok, original box, condition 1, | 1300,00 EURO | | |
| 6644 | Schuco, motordrill Clown, Germany, 13 cm, Blech, Uhrwerk ok, Okt. mit Loch Z 2, Z 1, (1410) | | | |
| | Schuco, motordrill Clown, Germany, 13 cm, tin, windup ok, original box with whole condition 2, condition 1, | 1200,00 EURO | | |
| 6645 | Schuco, Miraco Peter, Germany, 13 cm, Blech, Okt. Z 2, Z 1, (1410) | | | |
| | Schuco, Miraco Peter, Germany, tin, original box condition 2, condition 1, | 1200,00 EURO | | |
| 6646 | Schuco, Curvo, Germany, 13 cm, Blech, Uhrwerk ok, Okt. Z 1, seltene Ausführung mit Brille, Z 1, (2248) | | | |
| | Schuco, Curvo, Germany, tin, windup ok, original box condition 1, rare version with glasses, condition 1, | 790,00 EURO | | |
| 6647 | Schuco, Konstruktionsanhänger, Germany, 24 cm, Kunststoff, Okt. Z 1-, selten, 1955, Kunststoff verfärbt, sonst Z 1, (2248) | | | |
| | Schuco, Konstruktionsanhänger, Germany, plastic material, original box condition 1-, rare, 1955, plastic material discoloured, elsewhere condition 1, | 500,00 EURO | | |
| 6648 | Schuco, Radio-Auto WO 12, Germany, 16 cm, Blech, Radio ok, Z 1, (2248) | | | |
| | Schuco, Radio-car WO 12, tin, radio working, condition 1, | 300,00 EURO | | |
| 6649 | Carette, Limousine, Germany, 37 cm, Blech, Uhrwerk ok, große Version 1915, Reifen & Lampen original, Z 1-2, (1942) | | | |
| | Carette, limousine, Germany, tin, windup ok, large version 1915, tires & lights original, condition 1-2, | 3200,00 EURO | | |
| 6650 | Fischer, Limousine, Germany, 30 cm, Blech, Uhrwerk ok, 1915, alles original, Z 1-2, (1942) | | | |
| | Fischer, limousine, Germany, tin, windup ok, 1915, everything original, condition 1-2, | 2100,00 EURO | | |
| 6651 | Bing, Feldgraue Reiselimousine, Germany, 28 cm, Blech, Uhrwerk ok, Z 1-, (1942) | | | |
| | Bing, Feldgraue Reiselimousine, Germany, tin, windup ok, condition 1-, | 1900,00 EURO | | |
| 6652 | Distler, Stromlinien-Limousine, Germany, 32 cm, Blech, Uhrwerk ok, Okt. Z 1, 1930, 1 Türgriff fehlt, sonst Z 1, (1942) | | | |
| | Dislter, Stromlinien-Limousine, Germany, tin, windup ok, original box condition 1, 1930, 1 door-handle missing, elsewhere condition 1, | 1300,00 EURO | | |
| 6653 | Dreirad, 19 cm, Blech, Uhrwerk ok, handlackiert, bewegliche Beine, uralt, (1642) | | | |
| | trike, tin, windup ok, hand-painted, movable legs, very old, | 650,00 EURO | | |
| 6654 | Katze auf Podest (mit Musik), 24 cm, Blech, Uhrwerk ok, mit Kling-Klang, uralt, (1942) | | | |
| | cat on podium (plays music), tin, windup ok, with Klin-Klang, very old, | 600,00 EURO | | |
| 6655 | MS Brandenburg, streitende Ziegenböcke, DDR, 18 cm, Blech, Uhrwerk ok, Okt. Z 2, Z 1, (1410) | | | |
| | MS Brandenburg, fighting goats, GDR, tin, windup ok, original box condition 2, condition 1, | 1410,00 EURO | | |
| 6656 | TippCo, Dampfwalze, Germany, 20 cm, Blech, Uhrwerk ohne Funktion, Okt. Z 2-3, Z 2+, (1410) | | | |
| | TippCo, steam roller, Germany, tin, windup not working, original box condition 2-3, condition 2+, | 90,00 EURO | | |
| 6657 | Arnold, Shell-Tankstelle, Germany, 34 cm, Blech, Dach verbogen, Z 2, (1410) | | | |
| | Arnold, Shell-petrol station, Germany, tin, roof twisted, condition 2, | 450,00 EURO | | |
| 6658 | Kellermann, 'Tourist', Germany, 15 cm, Blech, Uhrwerk ok, minimale Lackschäden, Z 2, (2248) | | | |
| | Kellermann, 'Tourist', Germany, tin, windup ok, minimale losses of paint, condition 2, | 950,00 EURO | | |
| 6659 | Arnold, VW-Werk, Germany, 37 cm, Blech, Okt. Z 1-, Z 1, (2248) | | | |
| | Arnold, VW-Werk, Germany, tin, original box condition 1-, condition 1, | 300,00 EURO | | |
| 6660 | Arnold, MAN LKW, Germany, 30 cm, Kunststoff, Uhrwerk ok, Okt. Z 3, 1955, Z 1, (2248) | | | |
| | Arnold, MAN LKW, Germany, plastic material, windup ok, original box condition 3, 1955, condition 1, | 750,00 EURO | | |



- | | | | | | |
|------|---|-------------|--|--|--|
| 6661 | TippCo, Autobus 'Tourist', Germany, 34 cm, Blech, Friktion ok, Okt. Z 2, Z 1, (2248) | | | | |
| 6662 | TippCo, Autobus 'Tourist', Germany, tin, friction ok, original box condition 2, condition 1, | 300,00 EURO | | | |
| 6662 | Tippco, BMW Motorrad UK, Germany, 13 cm, Blech, Uhrwerk ok, Z 2, (2248) | | | | |
| | Tippco, BMW motorbike UK, Germany, tin, windup ok, condition 2, | 650,00 EURO | | | |
| 6663 | Fischer, kl. Tankstelle, Germany, 10 cm, Blech, Z 2, (2248) | | | | |
| | Fischer, small petrol station, tin, condition 2, | 40,00 EURO | | | |
| 6664 | Schuco, Radio-auto Replika, Germany, 15 cm, Z 1, (2248) | | | | |
| | Schuco, Radio-auto Replika, Germany, condition 1, | 20,00 EURO | | | |
| 6665 | Clown mit Gondel, 27 cm, Blech, Uhrwerk ok, restauriert; handlackiert; uralt. (2248) | | | | |
| | clown with gondola, tin, windup ok, restored, repainted, very old, | 600,00 EURO | | | |
| 6666 | Kellermann, Ford 17 M electric, Germany, 13 cm, Blech, Okt. Z 1, Z 1, (1462) | | | | |
| | Kellermann, Ford 17 M electric, Germany, tin, original box condition 1, condition 1, | 75,00 EURO | | | |
| 6667 | Kellermann, Ford 20 M, Germany, 13 cm, Blech, Friktion ok, Okt. Z 1, Z 1, (1462) | | | | |
| | Kellermann, Ford 20 M, Germany, tin, friction ok, original box condition 1, condition 1, | 50,00 EURO | | | |
| 6668 | Kellermann, Opel Record electric, Germany, 13 cm, Blech, Okt. Z 1, Z 1, (1462) | | | | |
| | Kellermann, Opel Record electric, Germany, tin, original box condition 1, condition 1, | 75,00 EURO | | | |
| 6669 | Wüko, Garage + 2 Autos, Germany, 6 cm, Blech, Z 1-2, (1462) | | | | |
| | Wüko, garage + 2 cars, Germany, tin, condition 1-2, | 40,00 EURO | | | |
| 6670 | Wüco, Caravan, W.Germany, 17 cm, Blech, Lackschäden, Z 2-3, (1462) | | | | |
| | Wüco, caravan, W.Germany, tin, losses of paint, condition 2-3, | 25,00EURO | | | |
| 6671 | GAMA, Mercedes, Germany, 22 cm, Gemischtbauweise Blech/ Kunststoff, Friktion ok, Stern fehlt, Z 2-, (1462) | | | | |
| | GAMA, Mercedes, Germany, mixed material tin/ plastic, friction ok, star missing, condition 2-, | 25,00 EURO | | | |
| 6672 | Schuco, Polizei Käfer 3000, Germany, 10 cm, Blech, Uhrwerk ok, Lenkung vorne fehlt, Z 2, (1462) | | | | |
| | Schuco, police Käfer 3000, Germany, windup ok, front stiring missing, condition 2, | 25,00 EURO | | | |
| 6673 | Linemar, Mercedes SL, Japan, 22 cm, Blech, Batterieantrieb ohne Funktion, Okt. Z 2, Batteriefach rostig, Hupe ok, Z 2+, (499) | | | | |
| | Linemar, Mercedes SL, Japan, tin, batterie drive not working, original box condition 2, batterie box rusty, horn works, condition 2+, | 180,00 EURO | | | |
| 6674 | Schuco, electro Fernlenk LKW, Germany, Blech, Okt. Z 2-3, mit Zubehör, Z 1-, (499) | | | | |
| | Schuco, electro remote controle truck, Germany, tin, original box condition 2-3, includes accessories, condition 1-, | 450,00 EURO | | | |
| 6675 | Arnold, MAC 700, Germany, 19 cm, Blech, Uhrwerk ok, Reprobex, Z 1-2, (499) | | | | |
| | Arnold, MAC 700, Germany, tin, windup ok, repro box, condition 1-2, | 580,00 EURO | | | |
| 6676 | TippCo, Feuerwehr, Germany, 35 cm, Gemischtbauweise Blech/ Kunststoff, Friktion ok, 1 seitlichen Kratzer, sonst Z 1, (499) | | | | |
| | TippCo, fire brigade, Germany, mixed material tin/ plastic, friction ok, scratch on 1 side, otherwise condition 1, | 290,00 EURO | | | |
| 6677 | Göso, Feuerwehr, Germany, 34 cm, Blech, Friktion ok, Lackschäden am Dach, Z 2, (499) | | | | |
| | Göso, fire brigade, Germany, tin, friction ok, losses of paint at roof, condition 2, | 190,00 EURO | | | |
| 6678 | GAMA, Tankstelle, Germany, 28 cm, Blech, minimale Lackschäden, Zapfsäulenanzeige klemmt, Z 1-2, (499) | | | | |
| | GAMA, petrol station, Germany, tin, minimale losses of paint, petrol pump indication stucked, condition 1-2, | 150,00 EURO | | | |
| 6679 | Volvo, Japan, 14 cm, Blech, Batterieantrieb ok, Antriebsrad etwas locker, Z 1-, (499) | | | | |
| | Volvo, Japan, tin, batterie drive ok, drive wheel bit loose, condition 1-, | 250,00 EURO | | | |
| 6680 | GAMA, 230 SL, Germany, 31 cm, Kunststoff, Friktion ok, Okt. Z 1, Z 1, (499) | | | | |
| | GAMA, 230 SL, Germany, plastic material, friction ok, original box condition 1, condition 1, | 320,00 EURO | | | |



6681



6682



6683



6684



6685



6686



6687



6688



6689



6690



6691



6692



6693



6694



6695



6696



6697



6698

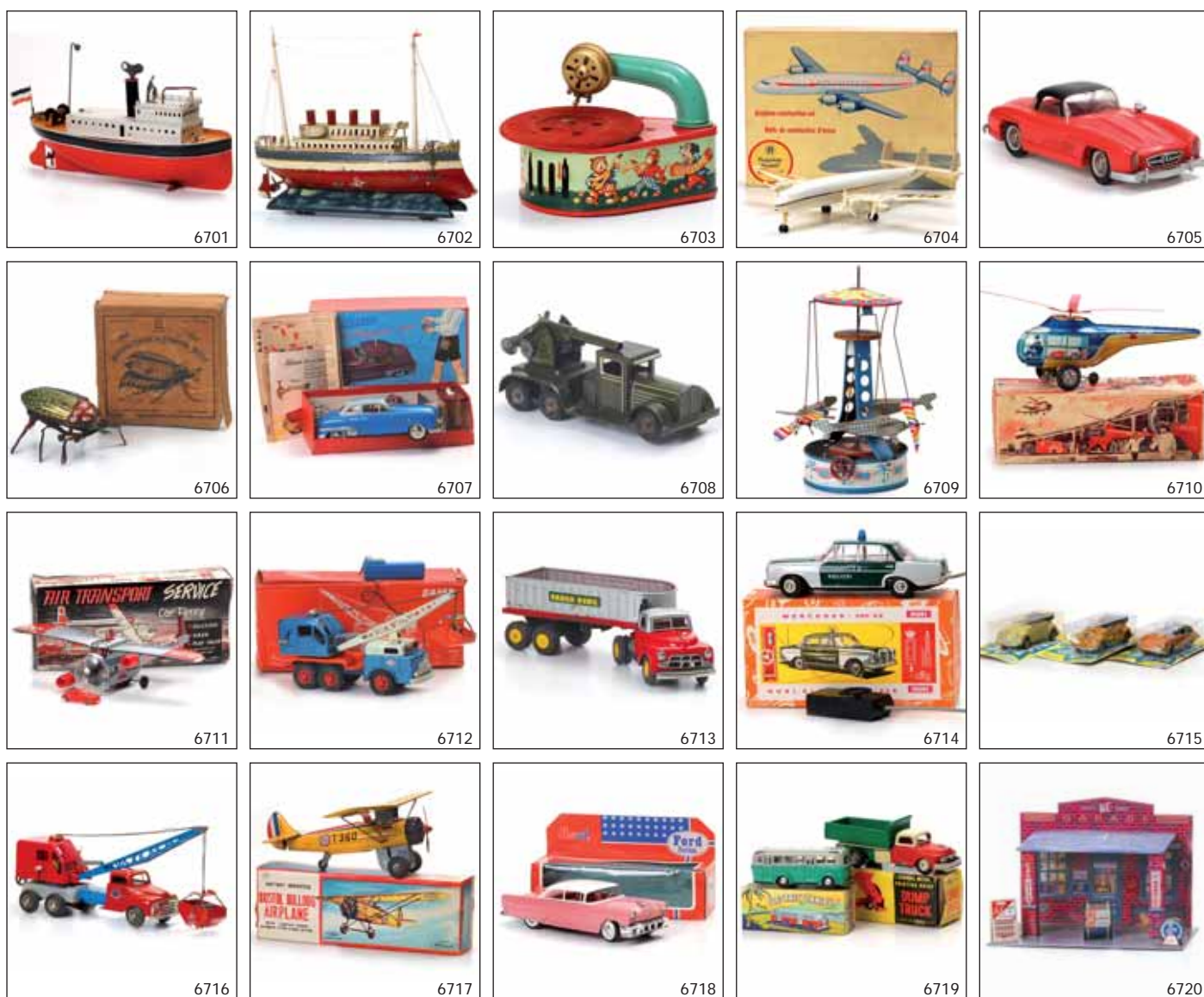


6699



6700

- | | | | | | |
|------|---|--------------|------|--|--------------|
| 6681 | GAMA, Mercedes, Germany, 33 cm, Kunststoff, Uhrwerk ok, Lackschäden, Okt. Z 2, Z 2, (499)
GAMA, Mercedes, Germany, plastic material, losses of paint, original box condition 2, condition 2, | 100,00 EURO | 6691 | Distler, großer Rennwagen, Germany, 52 cm, Blech, Uhrwerk ok, guter Originalzustand, (2219)
Distler, large racing car, Germany, tin, windup ok, good original condition, | 4800,00 EURO |
| 6682 | Kellermann, VW Bus Rotes Kreuz, Germany, Blech, Friktion ok, Okt. Z 1-, Z 1-, (1462)
Kellermann, VW Bus Rotes Kreuz, Germany, tin, friction ok, original box condition 1-, condition 1-, | 50,00 EURO | 6692 | Ingap, VW Käfer, Italy, 16 cm, Blech, Kunststoff, Friktion ok, Z 2, (2219)
Ingap, VW Käfer, Italy, tin, plastic material, condition 2, | 180,00 EURO |
| 6683 | Ismayer, Auto, Germany, 16 cm, Blech, Uhrwerk ok, guter Originalzustand, Okt., (2219)
Ismayer, car, Germany, tin, windup ok, good original condition, | 2200,00 EURO | 6693 | Arnold, Jeep, US-Zone Germany, 16 cm, Blech, Uhrwerk ok, Z 2-, (2219)
Arnold, Jeep, US-Zone Germany, tin, windup ok, condition 2-, | 280,00 EURO |
| 6684 | Carette, Limousine, Germany, 22 cm, Blech, Uhrwerk ok, Lackschäden, sehr guter Originalzustand, (2219)
Carette, limousine, Germany, tin, windup ok, losses of paint, excellent original condition, | 1200,00 EURO | 6694 | Müller/ Katheder, Heißluftballon als Kreisel, Germany, H 22 cm, Blech, Originalzustand, (2219)
Müller/ Katheder, hotair balloon-spinner, Germany, tin, original condition, | 2500,00 EURO |
| 6685 | Technofix, Flugzeug, Germany, 30 cm, Blech, Friktion ok, 1 Propellerblatt fehlt, (2219)
Technofix, airplane, Germany, tin, friction ok, 1 propeller blade missing, | 100,00 EURO | 6695 | Spardose 'week-end', H 7 cm, Blech, Z 2+, (2219)
Spardose 'week-end', tin, condition 2+, | 120,00 EURO |
| 6686 | Kellermann, Dreirad, Germany VK, 9 cm, Blech, minimale Lackschäden, Z 2, (2219)
Kellermann, trike, Germany pre war, minimale losses of paint, condition 2, | 480,00 EURO | 6696 | Keim, Spardose, US-Zone Germany, H 6 cm, Blech, Z 1, (2219)
Keim, savings box, US-Zone Germany, tin, condition 1, | 25,00 EURO |
| 6687 | Penny Toys, Feuerwehr, Germany, 8 cm, Blech, Lackschäden, (2219)
Penny Toys, fire brigade, Germany, tin, losses of paint, | 220,00 EURO | 6697 | Keim, Spardose, US-Zone Germany, H 6 cm, Blech, Z 1, (2219)
Keim, savings box, US-Zone Germany, tin, condition 1, | 25,00 EURO |
| 6688 | Penny Toys, Limousine, Germany, 10 cm, Blech, Z 1, (2219)
Penny Toys, limousine, Germany, tin, condition 1, | 180,00 EURO | 6698 | Bing, Dampfmaschine, Germany, Sockel 38x17,5 cm, H 34 cm, Okt., mit Dynamo, original Brenner, sehr guter Originalzustand, (2219)
Bing, steam engine, Germany, original box, with dynamo, original burner, excellent original condition, | 1950,00 EURO |
| 6689 | Penny Toys, pickende Hühner, Germany, 5,5 cm, Blech, Lackschäden, Funktion ok, (2219)
Penny Toys, eating hens, Germany, tin, losses of paint, functions ok, | 180,00 EURO | 6699 | Penny Toys, Fuhrwerk, Germany, 11 cm, Blech, Lackschäden, guter Originalzustand, (2219)
Penny Toys, cart, Germany, tin, losses of paint, good original condition, | 180,00 EURO |
| 6690 | Penny Toy, Motorrad, Germany, 10 cm, Blech, nicht komplett, (2219)
Penny Toys, motor bike, Germany, tin, not complete, | 580,00 EURO | 6700 | Penny Toys, Tram, Germany, 5,5 cm, Blech, CKO?, (2219)
Penny Toys, Tram, Germany, tin, CKO?, | 90,00 EURO |



- | | | | | | |
|------|--|--------------|---|---|------------|
| 6701 | Bing, Feuerlöschboot, Germany, 30 cm, Blech, guter Originalzustand, sehr selten, (2219) | | HWN, Air-Transport, W.Germany, tin, friction ok, original box condition 2-, crack in roof, condition 1-2, | 70,00 EURO | |
| 6702 | Bing, fire brigade boat, Germany, tin, good original condition, very rare, | 2500,00 EURO | 6712 | GAMA, Kranwagen, Germany, 35 cm, Blech, Friktion ok, Lackschäden, Lampe fehlt, Z 2-3, (1648) | |
| 6703 | Carette, Dampfer, Germany, 36 cm, Blech, Uhrwerk hängt, Lackschäden, 1 Mast muss neu befestigt werden, mit 2 Rettungsbooten, unrestaurierter Originalzustand, (2219) | | 6713 | GAMA, crane truck, Germany, tin, friction ok, losses of paint, light missing, condition 2.3, | 40,00 EURO |
| 6704 | Carette, steamer, Germany, tin, windup stucked, losses of paint, 1 mast needs to be attached, includes 2 lifeboats, original condition not resterauted, | 2400,00 EURO | 6714 | SSS, LKW mit Auflieger, Japan, 35 cm, Blech, Friktion ok, rostig, Z 2-3, (1648) | 30,00 EURO |
| 6705 | Keim, 'Dixie Phone' Kindergrammophon, W.Germany, 21 cm, Blech, Uhrwerk ok, Z 1-, (2219) | | 6715 | SSS, truck with trailer, Japan, tin, friction ok, rusty, condition 2-3, | |
| 6706 | Keim, 'Dixie Phone' kids grammophone, W.Germany, tin, windup ok, condition 1-, | 350,00 EURO | 6716 | Huki, Polizei Mercedes, Germany, 26 cm, Blech, Okt. Z 1, elektrische Fernbedienung, Z 1, (1648) | 25,00 EURO |
| 6707 | Schuco, electro Ingenico, Germany, Blech, minimale Lackschäden, Okt. Z 1-, mit Zubehör, Z 1-, (2219) | 480,00 EURO | 6717 | Huki, 2 Käfer + Porsche Cabrio, Germany, je 14 cm, in Blister/ 1x ADAC Straßenwacht, Z 1, (1648) | |
| 6708 | TippCo, Kanonenwagen, Germany, 15 cm, Blech, Uhrwerk hakt, Z 2, (2219) | 150,00 EURO | 6718 | Huki, 2 Käfer + Porsche Cabrio, Germany, in Blister/ 1x ADAC road watch, condition 1, | 30,00 EURO |
| 6709 | Fliegerkarussell, Germany, H 23 cm, Blech, Z 2, (2219) | 180,00 EURO | 6719 | Lincoln, Dump truck, Empire-made, 14 cm, Blech, Friktion ok, Okt. Z 1,2, + elektrischer Omnibus China, beides Z 1-2, (1648) | 35,00 EURO |
| 6710 | Technofix, großer Helicopter, US-Zone Germany, 34 cm, Blech, Uhrwerk ok, Okt. Z 1-2, Z 1, (2219) | 150,00 EURO | 6720 | Kiddy Car Corner, große Blechtankstelle, USA, 34 cm, Blech, mit Zubehör, Neuproduktion, Z 1, (311) | 40,00 EURO |
| 6711 | HWN, Air-Transport, W.Germany, 27 cm, Blech, Friktion ok, Okt. Z 2-, Riss in der Kuppel, Z 1-2, (1648) | | | | |